

HP EliteBook 645 14" G11 Notebook PC (9Y7R1ET)



Configuraciones personalizadas para adaptarse a las necesidades de la empresa

Satisface las distintas necesidades de tu plantilla laboral con la amplia gama de funciones configurables del ordenador HP EliteBook 645, sumamente seguro y fácil de utilizar. Diseñado con una pantalla que tiene una relación de aspecto de 16:10 para reducir la necesidad de realizar desplazamientos, y con un procesador AMD Ryzen de la serie 7000^l que se adapta fácilmente a los entornos de IT existentes.

HP recomienda Windows 11 Pro para empresas

Procesador AMD principal

Lleva a cabo tu trabajo con un procesador AMD Ryzen™ de la serie 7000 eficiente y seguro.

Protegido por HP Wolf Security

HP Wolf Security for Business crea una defensa resistente, siempre activa y reforzada por hardware.

Altavoces que se escuchan claros como el agua

Disfruta de la definición de audio que ofrecen los altavoces optimizados de Poly Studio y de la reducción de ruido por IA.

Incluye

Windows 11 Pro

Trabaja en cualquier lugar sin comprometer el rendimiento o la seguridad con Windows 11 con la tecnología de colaboración y conectividad de HP.

Imponente procesador AMD

Enfréntate a tu trabajo con un procesador AMD Ryzen™ serie 7000 eficiente y confiable que brinda una experiencia de alta capacidad de respuesta, con el moderno modo de espera conectado.

La Seguridad es la máxima prioridad

HP Wolf Pro Security Edition proporciona protección de PC de nivel empresarial preconfigurada para pequeñas y medianas empresas.

Rápida y eficiente red inalámbrica WiFi

La portabilidad de su PC y la fiabilidad de una conexión rápida determinan dónde puede trabajar. Consigue una conexión rápida y fiable en entornos inalámbricos densos con Wi-Fi 6 de velocidad gigabit.

Navegación Segura

Ayude a proteger su PC de los sitios web y lea solo archivos adjuntos de Microsoft Office y PDF con malware, ransomware o virus integrados con seguridad reforzada por hardware de HP Sure Click.

Especificaciones

Sistema operativo	Windows 11 Pro
Color del producto	Pike silver
Familia de procesadores	AMD Ryzen™ 7 PRO processor, Passmark 21533 , fecha de lanzamiento: 9/30/2023 (https://www.amd.com/es/products/processors/laptop/ryzen-pro/7000-series/amd-ryzen-7-pro-7735u.html)
Procesador	AMD Ryzen™ 7 PRO 7735U (hasta 4.75 GHz de reloj acelerado, 16 MB L3 cache, 8 núcleos, 16 hilos)
Memoria	16 GB DDR5-4800 MHz RAM (1 x 16 GB)
Ranuras de Memoria	2 Ranuras de Memoria, 1 disponible
Almacenamiento interno	512 GB PCIe® NVMe™ SSD
Gráficos	AMD Radeon™ Graphics, min res 800x600
Pantalla	WUXGA (1920 x 1200), IPS, narrow bezel, anti-glare, 300 nits, 45% NTSC
Pantalla	WUXGA (1920 x 1200), IPS, narrow bezel, anti-glare, 300 nits, 45% NTSC
Tamaño de la Pantalla (diagonal)	35,6cm (14") diagonal
Sonido	Audio de Poly Studio, altavoces estéreo duales con amplificadores independientes y micrófonos de matriz dual integrados
Dimensiones mínimas (ancho x fondo x alto)	31,86 x 22,44 x 1,09 cm (parte delantera); 31,86 x 22,43 x 1,7 cm (parte trasera) (La medida de la altura frontal se realiza cerca del borde delantero donde comienza la cubierta cónica inferior del chasis. La medida de la altura posterior se realiza cerca del borde posterior donde finaliza la cubierta cónica inferior del chasis.)
Peso	A partir de 1,39 kg (El peso variará según la configuración. No incluye el adaptador de alimentación.)
Teclado	Resistente a derrames y retroiluminado con DuraKeys.
Dispositivo señalador	Clickpad con soporte de gestos multitáctiles
Dispositivo de entrada	Lector de huellas dactilares Bloqueo frente a manipulaciones de HP; Sensor de efecto sala.
Cámara	1080p FHD camera, obturador de privacidad
Puertos	2 USB Type-C® con velocidad de señal de 40 Gbps (suministro de energía mediante USB y DisplayPort™ 1.4); 2 USB Type-A con velocidad de señal de 5 Gbps (1 de carga y 1 de alimentación); 1 HDMI 2.1; 1 conector combinado de auriculares/micrófono estéreo; 1 RJ-45 (El cable HDMI se vende por separado.)
Lector de Tarjetas Inteligentes	Integrado con soporte de DNIE 3.0
Dimensiones del embalaje (ancho x fondo x alto)	6,9 x 44,9 x 30,5 cm
Comunicaciones inalámbricas	Wi-Fi 6E MediaTek RZ616 (2x2) and Bluetooth® 5.3 wireless card
Alimentación eléctrica	65 W USB Type-C™ adapter
Tipo de batería	HP Long Life 3-cell, 56 Wh Li-ion polymer, HP battery Fast Charge and smart charge
Etiquetas ecológicas	EPEAT™ Gold certified ENERGY STAR® certified TCO certified
Especificaciones sobre impacto en sostenibilidad	Bajo contenido en halógenos. Embalajes disponibles a granel. El material de embalaje de celulosa de papel moldeada dentro de la caja es 100 % de origen sostenible y reciclable. Tanto el material del embalaje exterior como el corrugado son 100 % de origen sostenible y reciclable. 20 % de plástico reciclado posconsumo en la carcasa del altavoz y en el ventilador del sistema, evitando su destino en el océano. 50 % de metal reciclado.
Chip TPM y SecureBoot	TPM 2.0 y SecureBoot
Soporte del fabricante	Soporte técnico presencial bajo las condiciones de la garantía limitada de 1 año a domicilio, incluyendo piezas y mano de obra. Servicio de 1 año de HP Wolf Pro Security Edition. Para consultar las condiciones, visite https://h20195.www2.hp.com/v2/GetPDF.aspx/4AA8-1150ESE & https://www8.hp.com/h20195/v2/getpdf.aspx/4AA5-7123ESE.pdf
Garantía del fabricante	Opciones de garantía limitada de software de 1 año y 90 días según el país. Las baterías incluyen de forma predeterminada una garantía limitada de un año. Visita http://www.hp.com/support/batterywarranty/ para obtener más información sobre las baterías. Los servicios HP Care Pack son contratos opcionales de servicio técnico ampliado que van más allá de las garantías limitadas estándar. Para elegir el nivel adecuado de servicio técnico para tu producto HP, utiliza la herramienta de búsqueda de servicios HP Care Pack en: http://www.hp.com/go/cpc .

Accesorios y servicios recomendados para su Ordenador HP

HP dispone de un amplio catálogo de opciones y accesorios testeados para su ordenador HP. Al adquirir estos accesorios de forma conjunta con su ordenador HP, estos accesorios tendrán la misma garantía y soporte técnico que su ordenador.

A través de su distribuidor puede obtener un listado completo de accesorios y servicios que le proporcionen la mejor experiencia y soporte técnico.

© Copyright 2024 HP Development Company, L.P. La información que contiene este documento está sujeta a cambios sin previo aviso. Las únicas garantías de los productos y servicios de HP quedan establecidas en las declaraciones de garantía expresa que acompañan a dichos productos y servicios. Nada de lo aquí indicado debe interpretarse como una garantía adicional. HP no se responsabiliza de errores u omisiones técnicos o editoriales que puedan existir en este documento.

AMD, Ryzen y Radeon son marcas comerciales de Advanced Micro Devices, Inc. Thunderbolt es una marca comercial de Intel Corporation o de sus filiales en Estados Unidos y en otros países. DisplayPort™ y el logotipo de DisplayPort™ son marcas comerciales propiedad de la asociación para estándares electrónicos y de video (VESA®) en Estados Unidos y en otros países. USB Type-C® y USB-C® son marcas comerciales registradas de USB Implementers Forum. ENERGY STAR es una marca comercial registrada por la Agencia de Protección Ambiental (EPA) de Estados Unidos. El resto de marcas comerciales son propiedad de sus respectivos propietarios.



Desglose de las evidencias fase 1 para el caso del ordenador portátil

ORDENADOR PORTÁTIL	HP EliteBook 645 G11
CPU	
Procesador	AMD Ryzen 7 PRO 7735U
Velocidad (GHz)	4.75 GHz frecuencia máxima o turbo
Núcleos físicos	8 núcleos
Fecha de lanzamiento	9/30/2023
Puntuación PassMark	21533
Otros dispositivos	
Memoria RAM	16 GB DDR5-4800 MHz
Almacenamiento interno	512 GB SSD NVMe
Sistema Operativo	Windows 11 Pro-64
Tarjeta gráfica	3840x2160 @ 60Hz , 3440x1440 @ 144Hz , 2560x1440 @ 180Hz , 1920x1080 @ 240Hz
Nº pantallas soportadas	Integrada + 1 x pantalla externa

Tarjeta de sonido	Integrada
Conectividad inalámbrica	
WiFi	WiFi 6E
Bluetooth	Bluetooth 5.3
Interfaces E/S	
USB 3.0 tipo A	2 x USB 3.1 Tipo A
USB 3.0 tipo C	2 x USB 3.1 Tipo C (DisplayPort + Power Delivery + USB)
Red Ethernet	1 x RJ-45 1 Gbps
Video	HDMI 2.1
Audio E/S	Interfaz de audio jack 3.5 mm
Dock station	NO se suministra dock station
Pantalla	
Tamaño de la pantalla	14 pulgadas
Periféricos	
Teclado español	Teclado español ES-ES
Ratón	Ratón integrado táctil con dos botones o ratón óptico con dos botones y scroll
Webcam	Webcam FullHD con obturador de privacidad
Lector de tarjetas inteligentes integrado ISO-7816 (DNI-e)	SÍ
Batería	
Batería tipo smartbattery	Batería tipo smart battery
Certificados energéticos	
EPEAT	SI
Energy Star 8.0	SI
TCO	SI
ECMA 370	SI, como ECO Declaration
Certificados de robustez	
Certificación MIL STD 810H	Método de prueba 501.7 Alta temperatura Método de prueba 502.7 Baja temperatura Método de prueba 507.6 Humedad. Métodos adicionales: Caída Choque Funcional Vibración (Categoría 4) Vibración (Categoría 5) Vibración (Categoría 24) Polvo Humedad Altitud (Procedimiento I) Altitud (Procedimiento II) Alta Temperatura (Procedimiento I) Alta Temperatura (Procedimiento II) Baja Temperatura (Procedimiento I) Baja Temperatura (Procedimiento II) Choque de Temperatura Arena Congelación/Descongelación Choque de Manipulación en Banco Choque de Peligro de Colisión Choque de Transporte
Seguridad	
Arranque seguro	Sí
Chip	TPM 2.0

Cámara compatible con reconocimiento facial	NO
Lector de huellas dactilares	SÍ
Otro dispositivo de identificación biométrica	NO

Test	HP EliteBook 630/640/645/650 G9/G10;655 G10; 630/635 Aero/640/645/660/665 G11	HP EliteBook Ultra G1q; 830/840/860/835/845/865 G9/G10/G11; 1040 G9/G10/G11
Tested Under	810H	810H
Drop	Passed	Passed
Functional Shock	Passed	Passed
Vibration (Category 4)	Passed	Passed
Vibration (Category 5)	Passed	Passed
Vibration (Category 24)	Passed	Passed
Dust	Passed	Passed
Humidity	Passed	Passed
Altitude (Procedure I)	Passed	Passed
Altitude (Procedure II)	Passed	Passed
High Temperature (Procedure I)	Passed	Passed
High Temperature (Procedure II)	Passed	Passed
Low Temperature (Procedure I)	Passed	Passed
Low Temperature (Procedure II)	Passed	Passed
Temperature Shock	Passed	Passed
Sand	Passed	Passed
Freeze/Thaw	Passed	Passed
Bench Handling Shock	Passed	Passed
Crash Hazard Shock	Passed	Passed
Transportation Shock	Passed	Passed






(en) DECLARATION OF CONFORMITY / (de) KONFORMITÄTSERLÄRUNG / (fr) DÉCLARATION DE CONFORMITÉ / (es) DECLARACIÓN DE CONFORMIDAD

DoC #: HSN-Q39C-4- R3

<p>(en) Manufacturer's Name (de) Herstellername (fr) Nom du fabricant (es) Nombre del fabricante</p>	<p align="center">HP Inc.</p>	
<p>(en) Manufacturer's Address (de) Adresse des Herstellers (fr) Adresse du fabricant (es) Dirección del fabricante</p>	<p align="center">1501 Page Mill Road, Palo Alto, CA 94303-1112 USA</p>	
<p>(en) declare, under its sole responsibility that the product (de) erklärt, dass das Produkt (fr) déclare que le produit (es) declara que el producto</p>		
<p>(en) Product Name and Model^{5.2} (de) Produktname und Modell^{5.2} (fr) Nom du produit et modèle^{5.2} (es) Nombre del producto y modelo^{5.2}</p>	<p>HP ProBook 445 14 inch G11 Notebook PC; HP ProBook 445 14 inch G11 series; HP Elite mt645 G8 Mobile Thin Client; HP Elite mt645 G8 series; HP EliteBook 645 14 inch G11 Notebook PC; HP EliteBook 645 14 inch G11 series</p>	
<p>(en) Regulatory Model Number^{5.1} (de) Regulatorische Modell Nummer^{5.1} (fr) Numéro de modèle réglementaire^{5.1} (es) Número de modelo reglamentario^{5.1}</p>	<p align="center">HSN-Q39C-4</p>	
<p>(en) Product Options (de) Produktoptionen (fr) Options du produit (es) Opciones del producto</p>	<p>(en) Please See ANNEX 1 (de) Siehe Anhang I (fr) Voir l'annexe I (es) Ver Anexo I</p>	
<p>(en) conforms to the following Product Specifications and Regulations (de) entspricht den folgenden Produktspezifikationen und Vorschriften (fr) est conforme aux normes et règlements de produit suivants (es) cumple con las siguientes especificaciones y normas de productos</p>		
<p>(en) Safety / (de) Sicherheit / (fr) Sécurité / (es) Seguridad IEC 62368-1:2018 EN IEC 62368-1:2020 +A11:2020 EN IEC 62311:2020 EN 50665:2017 EN 62479:2010 EN 50663:2017 EN 50364:2018</p>	<p>(en) EMC / (de) EMV / (fr) EMC / (es) EMC EN 55032:2015+A11:2020 EN 55035:2017+A11:2020 EN 61000-3-2:2014 EN 61000-3-3:2013 +A1:2019 EN 301 489-1 V2.2.3 EN 301 489-3 V2.3.2 EN 301 489-17 V3.2.4 EN 301 489-19 V2.2.1 EN 301 489-52 V1.2.1 EN 60601-1-2:2015+ AMD1:2021 FCC CFR 47 Part 15 ICES-003, Issue 7</p>	<p>(en) Spectrum / (de) Frequenzspektrum / (fr) Spectre radioélectrique / (es) Espectro radioeléctrico EN 300 328 V2.2.2 EN 301 893 V2.1.1 EN 300 440 V2.1.1 EN 303 687 V1.1.1 EN 301 908-1 V15.2.1 EN 301 908-2 V13.1.1 EN 301 908-13 V13.2.1 EN 303 413 V1.2.1 EN 300 330 V2.1.1</p>
<p>(en) Ecodesign / (de) Öko-Design / (fr) Écoconception / (es) Diseño ecológico Regulation (EU) 2023/826 EN 50564:2011 IEC 62301:2011</p>		
<p>RoHS EN IEC 63000:2018</p>		
<p>(en) The product herewith complies with the requirements of the following and carries the CE-marking accordingly (de) Das Produkt hiermit entspricht den Anforderungen der folgenden und trägt das entsprechende CE-Kennzeichen (fr) Le produit est conforme aux exigences suivantes et porte le marquage CE en conséquence (es) El producto presente cumple con los requisitos de lo siguiente y conlleva el marcado CE en consecuencia</p>	<p>Radio Equipment Directive 2014/53/EU Ecodesign Directive 2009/125/EU RoHS Directive 2011/65/EU Battery Regulation 2023/1542</p>	

(en) DECLARATION OF CONFORMITY / (de) KONFORMITÄTSEKTLÄRUNG / (fr) DÉCLARATION DE CONFORMITÉ / (es) DECLARACIÓN DE CONFORMIDAD

DoC #: HSN-Q39C-4- R3

UK ONLY: This product herewith complies with the requirements of the following and carries the  marking.

Radio Equipment Regulations 2017
Ecodesign for Energy-Related Products Regulations 2010
Restriction of the Use of Certain Hazardous Substances in Electrical and Electronic Equipment Regulations 2012

(en) Additional Information
(de) Zusätzliche Information
(fr) Informations complémentaires
(es) Información Adicional:

5.1)

(en) This product is assigned a Regulatory Model Number which stays with the regulatory aspects of the design. The Regulatory Model Number is the main product identifier in the regulatory documentation and test reports, this number should not be confused with the marketing name or the product numbers.

(de) Für die regulatorischen Aspekte zum Design wurde diesem Produkt eine Regulatorische Modell Nummer zugeordnet. Zur Produktidentifizierung in der regulatorischen Dokumentation und den Prüfberichten wird diese Regulatorische Modell Nummer verwendet und sollte nicht zu Verwechslungen von Marketingnamen oder Produktnummern führen.

(fr) A ce produit est assigné un numéro de modèle réglementaire qui est associé avec les aspects réglementaires liés à la conception du produit. Le numéro de modèle réglementaire est le principal identificateur du produit dans la documentation réglementaire et les rapports d'essais, ce nombre ne doit pas être confondu avec le nom commercial ou les numéros de produit.

(es) A este producto se asigna un número de modelo regulatorio que cumple con los aspectos regulatorios del diseño. El número de modelo normativo es el identificador principal del producto en la documentación reglamentaria e informes de ensayo, este número no se debe confundir con el nombre comercial o los números del producto.

5.2)

(en) This product was tested in a typical HP environment.

(de) Dieses Produkt wurde in einer typischen HP Konfiguration getestet.

(fr) Ce produit a été testé dans un environnement typique HP.

(es) Este producto se ha probado en un entorno típico de HP.

(en) The listed Notified Body issued the listed EU-type examination certificate, according to Annex III, for the essential requirement of article 3.2 of the RED Directive.

(de) Die aufgeführte angegebene Einrichtung hat das aufgeführte EU-Prüfungszertifikat gemäß Anhang III für die wesentliche Anforderung von Artikel 3.2 der Red Richtlinie herausgegeben.

(fr) L'organisme notifié répertorié a délivré le certificat d'examen de type UE répertorié, selon l'annexe III, pour l'exigence essentielle de l'article 3.2 de la directive rouge.

(es) El organismo notificado listado emitió el certificado de examen de tipo UE listado, de acuerdo con el Anexo III, para el requisito esencial del Artículo 3.2 de la Directiva Roja.

Notified Body: SPORTON INTERNATIONAL (USA) INC
Notified Body Number: 2907
Certificate ID: SN24C0011

Palo Alto, CA
30-04-2024

 **HP Inc.**
1501 Page Mill Road, Palo Alto, CA
Gilles Soulard, Manager
Product Compliance Center

Gilles Soulard
Gilles Soulard, Manager
Product Compliance Center

(en) Local contact for regulatory topics only
(de) Lokale Ansprechpartner für Richtlinien und Bestimmungen
(fr) Contact local uniquement pour les réglementations
(es) Contacto local únicamente para temas de normativa:

EU: HP REG 23010, 08028 Barcelona, Spain

UK: HP Inc UK Ltd, Regulatory Enquiries, Earley West, 300 Thames Valley Park Drive, Reading, RG6 1PT

U.S.: HP Inc., 1501 Page Mill Road, Palo Alto 94304, U.S.A. 650-857-1501

Email: reg@hp.com

www.hp.eu/certificates

(en) DECLARATION OF CONFORMITY / (de) KONFORMITÄTSERKLÄRUNG / (fr) DÉCLARATION DE CONFORMITÉ / (es) DECLARACIÓN DE CONFORMIDAD

DoC #: HSN-Q39C-4- R3

(en) ANNEX I (de) ANHANG I (fr) ANNEXE I (es) ANEXO I	
(en) Regulatory Model Number (RMN) (de) Regulatorische Modell Nummer (RMN) (fr) Numéro de modèle réglementaire (RMN) (es) Número de modelo reglamentario (RMN)	HSN-Q39C-4
1 (en) DESCRIPTION 2 (en) OPTION RMN* 1 (de) BESCHREIBUNG 2 (de) RMN OPTION* 1 (fr) DESCRIPTION 2 (fr) RMN OPTION* 1 (es) DESCRIPCIÓN 2 (es) RMN OPCIÓN*	

1	2
Power Adapter	TPN-XA07 TPN-XA15 TPN-XA19 TPN-XA20 TPN-XA21 TPN-XA23 TPN-XA01
Battery Pack	HSTNN-XB1G HSTNN-XB3Q HSTNN-XB3R HSTNN-XB0H TPN-XB1Y TPN-XB1Z TPN-XB1C
Transceiver 2,4 and 5/6 GHz WLAN and BT	MT7922A22M RTL8852CE
WWAN Transceiver, GPS Receiver	FM350-GL-16
NFC	XRAV-1

**(en) DECLARATION OF CONFORMITY / (de) KONFORMITÄTSERKLÄRUNG / (fr) DÉCLARATION DE
CONFORMITÉ / (es) DECLARACIÓN DE CONFORMIDAD**

DoC #: HSN-Q39C-4- R3

(en) *Where X represents any alpha numeric character.
(de) *Wo X steht für eine beliebige alphanumerische Zeichen
(fr) *Où X représente n'importe quel caractère alphanumérique
(es) *Donde X representa cualquier carácter alfanumérico

HP Inc.
1501 Page Mill Road
Palo Alto, CA 94304 US

Martin Glagla
Email: mglagla@us.tuv.com

March 6, 2024

Attn: Katherine Kim

Confirmation of ENERGY STAR® certification

Type of Equipment: Notebook Computer
Model Name: HP ProBook 445 14 inch G11 Notebook PC (ENERGY STAR);
HP Elite mt645 G8 Mobile Thin Client (ENERGY STAR);
HP EliteBook 645 14 inch G11 Notebook PC (ENERGY STAR)
Model Number: HSN-Q39C-4
Product Specification: ENERGY STAR Program Requirements for Computers,
Eligibility Criteria Version 8.0
TUV File Number: 2024ES-X8VP2-001

Dear Katherine Kim:

This is notification that TUV Rheinland has certified the performance of the aforementioned product according to the ENERGY STAR® Program Requirements and will report all required information for the certified product to the U.S. Environmental Protection Agency (EPA).

The certified product meets ENERGY STAR® eligibility criteria and will be listed on the ENERGY STAR Qualified Product website if the model is intended for commerce in the U.S. and/or Canada. You may begin labeling the certified product in accordance to your ENERGY STAR® Partnership Agreement and Commitments.

Please review the above for accuracy and address desired changes to the below mentioned contact.

If this product is listed on the ENERGY STAR Qualified Product website it is eligible for re-testing based on the ENERGY STAR randomly selected 'Verification Testing' program. In the event your product is randomly selected a separate notification will be sent out requesting product availability information. This information will be used for quoting the required 'Verification Testing'. Failure to reply to the product availability request within 10 business days will result in further action. This may include forfeiture to use the ENERGY STAR mark and termination of your partner agreement with EPA. TUV Rheinland offers a broad portfolio of service providing global energy efficiency testing solutions, including EPA (ENERGY STAR®), Natural Resources Canada (NRCan), Energy Related Products (ErP) Directive, Europe EcoLabel, and Germany's Blue Angel Quality Seal as well as Green Services.

If we can be of any further assistance, please do not hesitate to call upon us.

Sincerely,
TUV Rheinland of North America, Inc.

Martin Glagla
Certifier

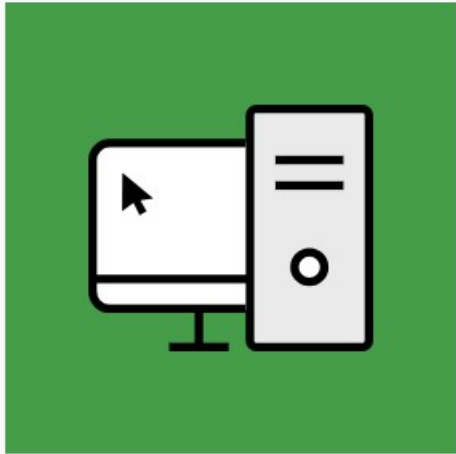


TUV Rheinland
of North America, Inc.

1279 Quarry Lane, Suite A
Pleasanton, CA 94566

Tel 925-249-9123
Fax 925-249-9124
Toll Free TUV-RHEINLAND
Mail info@tuv.com
Web www.tuv.com

Member of
TUV Rheinland Group



COMPUTERS &
DISPLAYS

HP EliteBook 645 14 inch G11 Notebook PC ENERGY STAR

Product Summary:

Product Type:	Notebook
Registered In:	Spain
Manufacturer:	HP
EPEAT Tier:	Gold
Registration Date:	2024-04-22
Product Status:	Active
Exceptions:	Configurations that are not ENERGY STAR qualified do not meet required criterion 4.5.1.1.

Universal Product Code(s): 197498563039, 197498563046, 197498563053, 197498563060, 197498563077, ...
[View all \(17\)](#)

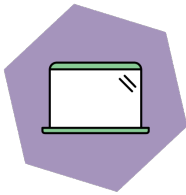
All unique product identifiers existing for this product may not be listed here. If the unique product identifier you are looking for is not listed, please contact EPEAT at EPEAT@GEC.org.

[EXPORT PRODUCT SUMMARY](#)



CERTIFICATE

TCO Certified, generation 9 for notebooks



Brand name: HP

Sales name: HP EliteBook 645 14 inch G11 Notebook PC

Certification date: 2024-04-14

Expiry date: 2026-04-14

Toward sustainable IT products

TCO Certified is the world-leading sustainability certification for IT products. It is an easy-to-use tool that helps you get environmental and social sustainability right. Criteria are mandatory, tough, and apply globally. Compliance is always independently verified.

For more information, visit tcocertified.com.

No. N924040469

Jarl Stephansson
Certification process
TCO Development

This certificate confirms that a sample of the certified product, as stated herein, has been tested and approved as to its compliance with the criteria document valid at the time of the laboratory test. The certified product may, subject to the use of the unique combination of brand name, type/model name and sales name as stated in this certificate, be marked and sold with the TCO Certified label in accordance with the agreement.

Appendix to certificate No. N924040469



Brand name: HP

Sales name(s):

HP EliteBook 645 14 inch G11 Notebook PC

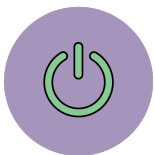
Separate power supply: Yes, Class 1
Operating mode sound level: 3.7 B



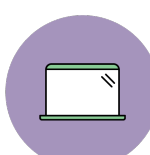
22%
Recycled plastic



1.7 kg
Total weight of product



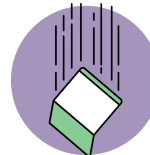
Energy consumption:
For energy consumption and
yearly emissions, visit
tcocertified.com/product-finder/



Aspect ratio: Other
Panel size: 14 in
Min. resolution width: 1920 px
Min. resolution height: 1200 px



Battery longevity:
The main battery in this product is
tested to withstand at least: **300**
full discharges until it reaches
80% of the initial capacity



Durability
Drop test height: 76.2 cm
High temp operational: 60° C
Low temp operational: -29° C

Model names(s)

HSN-Q39C-4

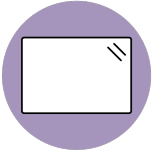
Model name type key(s)

1st * : N/A

2nd * : N/A

Jarl Stephansson
Certification process
TCO Development

Appendix to certificate No. N924040469



Panels:

AUO B140UAN04.6, BOE NV140WUM-N41, INNOLUX N140JCA-EEK, LG Display LP140WU4 (SP)(D1), AUO B140UAN02.4, BOE NE140WUM-N67, INNOLUX N140JCG-GS9, LG Display LP140WU1 (SP) (D2), AUO B140UAK02.3, BOE NV140WUM-T01, INNOLUX N140JCN-EEK, BOE NE140WUM-N6P, IVO X140NV4J R0



Batteries:

Dynapack TPN-DB1Z, Simplo TPN-IB1C, Dynapack TPN-DB1Y, CosMX HSTNN-OB3R, CosMX HSTNN-OB3Q, SUNWODA HSTNN-WB0H, ATL HSTNN-AB1G



Adapters:

hp TPN-AA07, hp TPN-CA20, hp TPN-DA15, hp TPN-LA19, hp TPN-CA21, hp TPN-DA20, hp TPN-HA01, hp TPN-LA23, hp TPN-CA31, hp TPN-DA32, hp TPN-LA31

A handwritten signature in black ink, appearing to read 'Jarl Stephansson'.


Jarl Stephansson
Certification process
TCO Development

THE ECO DECLARATION



Annex B2 - Product environmental attributes Computers and computer monitors

The declaration may be published only when all rows and/or fields marked with * are filled-in (n.a. for not applicable). Additional information regarding each item may be found under P15.


Brand *	HP	Logo 
Company name *	HP	
Contact information * e-mail address	HP Sustainability and Compliance Center sustainability@hp.com	
Internet site *	http://www.hp.com/hpinfo/globalcitizenship/environment/	
Additional information		

The company declares (based on product specification or test results based obtained from sample testing), that the product conforms to the statements given in this declaration.	
Type of product *	Notebook PC
Commercial name *	HP EliteBook 645 14 inch G11 Notebook PC ENERGY STAR
Model number *	645 G11
Issue date *	4/19/2024
Intended market *	<input checked="" type="checkbox"/> Global <input checked="" type="checkbox"/> Europe <input type="checkbox"/> Asia, Pacific & Japan <input type="checkbox"/> Americas <input type="checkbox"/> Other
Additional information	

This is an uncontrolled copy when in printed form. Please refer to the contact information for the latest version.


er

<p>About Annex B2 Annex B2 reflects Product environmental attributes relevant for Computers and Computer Monitors. The following items from the ECMA-370 Main body are not shown in the template: P4.1 – P4.3 Consumable materials P9.1 TEC and Print speed P10.2 - P10.3 Chemical emissions from printing products P11.1 - P11.3 Consumable materials for printing products.</p>

Model number *	645 G11	Logo	
Issue date *	4/19/2024		

Product environmental attributes - Legal requirements		Requirement met		
Item		Yes	No	n.a.
P1 Hazardous substances and preparations				
P1.1*	Products do comply with current European RoHS Directive. (See legal reference and NOTE B1)	<input checked="" type="checkbox"/>	<input type="checkbox"/>	
P1.2*	Products do not contain Asbestos (see legal reference). Comment: Legal reference has no maximum concentration value.	<input checked="" type="checkbox"/>	<input type="checkbox"/>	
P1.3*	Products do not contain Ozone Depleting Substances: Chlorofluorocarbons (CFC), hydrobromofluorocarbons (HBFC), hydrochlorofluorocarbons (HCFC), Halons, carbontetrachloride, 1,1,1-trichloroethane, methyl bromide (see legal reference). Comment: Legal reference has no maximum concentration values.	<input checked="" type="checkbox"/>	<input type="checkbox"/>	
P1.4*	Products do not contain more than; 0,005% polychlorinated biphenyl (PCB), 0,005% polychlorinated terphenyl (PCT) in preparations (see legal reference).	<input checked="" type="checkbox"/>	<input type="checkbox"/>	
P1.5*	Products do not contain more than 0,1% short chain chloroparaffins (SCCP) with 10-13 carbon atoms in the chain containing at least 48% per mass of chlorine in the SCCP (see legal reference).	<input checked="" type="checkbox"/>	<input type="checkbox"/>	
P1.6*	Parts with direct and prolonged skin contact do not release nickel in concentrations above 0,5 µg/cm ² /week (see legal reference). Comment: Max limit in legal reference when tested according to EN1811:2011-5.	<input checked="" type="checkbox"/>	<input type="checkbox"/>	<input type="checkbox"/>
P1.7*	REACH Article 33 information about substances in articles is available at (add URL or mail contact): REACH Article 33 Declarations (hp.com)	<input checked="" type="checkbox"/>	<input type="checkbox"/>	<input type="checkbox"/>
P2 Batteries				
P2.1*	If the product contains a battery or an accumulator, the battery/accumulator is labeled with the disposal symbol. Information on proper disposal is provided in user manual. (See legal reference)	<input checked="" type="checkbox"/>	<input type="checkbox"/>	<input type="checkbox"/>
P2.2*	Batteries or accumulators do not contain more than 0,0005% of mercury or 0,002% of cadmium. (See legal reference)	<input checked="" type="checkbox"/>	<input type="checkbox"/>	<input type="checkbox"/>
P2.3*	Batteries and accumulators are readily removable. (See legal reference)	<input type="checkbox"/>	<input checked="" type="checkbox"/>	<input type="checkbox"/>
P2.4*	Documentation includes the number of cycles the (secondary) battery can withstand. (See legal reference)	<input checked="" type="checkbox"/>	<input type="checkbox"/>	<input type="checkbox"/>
P2.5*	When internal batteries of a notebook computer cannot be "accessed and replaced by a nonprofessional user", the related text is present and legible on the external packaging (see legal reference)	<input checked="" type="checkbox"/>	<input type="checkbox"/>	<input type="checkbox"/>
P3 Conformity verification & Eco design (ErP)				
P3.1*	The product is CE-marked to show conformance with applicable legal requirements (see legal reference). The Declaration of Conformity can be requested at (add link or e-mail address): http://www8.hp.com/uk/en/certifications/technical/regulations-certificates.html sustainability@hp.com	<input checked="" type="checkbox"/>	<input type="checkbox"/>	<input type="checkbox"/>
P3.2*	The product complies with the applicable Eco design requirements for energy-related products, (see legal reference). Required information is; <input checked="" type="checkbox"/> given in item P15 or added to this document, <input type="checkbox"/> available at (add URL):	<input checked="" type="checkbox"/>	<input type="checkbox"/>	<input type="checkbox"/>
P5 Product packaging				
P5.1*	Packaging and packaging components do not contain more than 0,01% lead, mercury, cadmium and hexavalent chromium by weight of these together.	<input checked="" type="checkbox"/>	<input type="checkbox"/>	
P5.2*	The packaging materials are marked with abbreviations and numbers indicating the nature of the material(s) used (see legal reference).	<input checked="" type="checkbox"/>	<input type="checkbox"/>	<input type="checkbox"/>
P5.3*	The product packaging material is free from ozone depleting substances as specified in the Montreal Protocol (see legal reference). Comment: Legal reference has no maximum concentration values.	<input checked="" type="checkbox"/>	<input type="checkbox"/>	<input type="checkbox"/>
P6 Treatment information				
P6.1*	Information for recyclers/treatment facilities is available (see legal reference).	<input checked="" type="checkbox"/>	<input type="checkbox"/>	<input type="checkbox"/>

NOTE B1 Restriction applies to the homogeneous material, unless other specified and expressed in weight %. Stating "Yes" means that the product is compliant with the mandatory requirements.

Model number *	645 G11	Logo	
Issue date *	4/19/2024		


Product environmental attributes - Market requirements (See General NOTE GN below)		Requirement met		
- Environmental conscious design		Yes	No	n.a.
Item	*=mandatory to fill in. Additional information regarding each item may be found under P14.			
P7	Design			
	Disassembly, recycling			
P7.1*	Parts that have to be treated separately are easily separable	<input checked="" type="checkbox"/>	<input type="checkbox"/>	<input type="checkbox"/>
P7.2*	Plastic materials in covers/housing have no surface coating.	<input type="checkbox"/>	<input checked="" type="checkbox"/>	<input type="checkbox"/>
P7.3*	Plastic parts > 100 g consist of one material or of easily separable materials.	<input checked="" type="checkbox"/>	<input type="checkbox"/>	<input type="checkbox"/>
P7.4*	Plastic parts > 25 g have material codes according to ISO 11469 referring ISO 1043-4.	<input checked="" type="checkbox"/>	<input type="checkbox"/>	<input type="checkbox"/>
P7.5	Plastic parts are free from metal inlays or have inlays that can be removed with commonly available tools.	<input checked="" type="checkbox"/>	<input type="checkbox"/>	<input type="checkbox"/>
P7.6*	Labels are easily separable. (This requirement does not apply to safety/regulatory labels).	<input checked="" type="checkbox"/>	<input type="checkbox"/>	<input type="checkbox"/>
	Product lifetime			
P7.7*	Upgrading can be done e.g. with processor, memory, cards or drives	<input checked="" type="checkbox"/>	<input type="checkbox"/>	<input type="checkbox"/>
P7.8*	Upgrading can be done using commonly available tools	<input checked="" type="checkbox"/>	<input type="checkbox"/>	<input type="checkbox"/>
P7.9	Spare parts are available after end of production for: 5 years			<input type="checkbox"/>
P7.10	Service is available after end of production for: 5 years			<input type="checkbox"/>
	Material and substance requirements			
P7.11*	Product cover/housing material type (e.g. plastics, metal, aluminum): Material type: aluminium Material type: stainless steel Material type:			
P7.12	Insulation materials of external electrical cables are PVC free.	<input type="checkbox"/>	<input checked="" type="checkbox"/>	<input type="checkbox"/>
P7.13	Insulation materials of internal electrical cables are PVC free.	<input checked="" type="checkbox"/>	<input type="checkbox"/>	<input type="checkbox"/>
P7.14	External plastic casing/cover parts > 25 g contain no more than 0,1% weight (1000 ppm) bromine and 0,1% weight (1000 ppm) chlorine attributable to brominated flame retardants, chlorinated flame retardants, and polyvinyl chloride or 0,3% weight (3000 ppm) bromine and 0,3% weight (3000 ppm) chlorine in parts containing more than 25% post-consumer recycled content.	<input checked="" type="checkbox"/>	<input type="checkbox"/>	<input type="checkbox"/>
P7.15	Printed circuit boards, PCBs (without components) are low halogen: all <input type="checkbox"/> PCBs > 25 g <input checked="" type="checkbox"/> are low halogen as defined in IEC 61249-2-21. (See ⁵ NOTE B2)	<input checked="" type="checkbox"/>	<input type="checkbox"/>	<input type="checkbox"/>
P7.16	Flame retarded plastic parts > 25 g in covers / housings are marked according ISO 1043-4: Marking:	<input type="checkbox"/>	<input type="checkbox"/>	<input checked="" type="checkbox"/>
P7.17	<u>Alt. 1:</u> Chemical specifications of flame retardants in printed circuit boards > 25 g (without components): TBBPA (additive) <input type="checkbox"/> , TBBPA (reactive) <input type="checkbox"/> (See NOTE B3), Other; chemical name: , CAS #: <u>Alt. 2:</u> Chemical specifications of flame retardants in printed circuit boards (without components) > 25 g according ISO 1043-4: FR(40)	<input type="checkbox"/>	<input type="checkbox"/>	<input type="checkbox"/>
P7.18	<u>Alt. 1:</u> Flame retarded plastic parts > 25 g contain the following flame retardant substances/preparations in concentrations above 0,1%: 1. Chemical name: , CAS #: (See NOTE B4) 2. Chemical name: , CAS #: " 3. Chemical name: , CAS #: " <u>Alt. 2:</u> Chemical specifications of flame retardants in plastic parts > 25 g according ISO 1043-4:	<input type="checkbox"/>	<input type="checkbox"/>	<input type="checkbox"/>
P7.19	In plastic parts > 25 g, flame retardant substances/preparations above 0,1% are used which have been assigned the following Risk phrases; and Hazard statements: The source(s) for these classifications is/are found at (add URL(s)): http://echa.europa.eu/web/guest/information-on-chemicals/cl-inventory-database (See note B5)	<input type="checkbox"/>	<input type="checkbox"/>	<input checked="" type="checkbox"/>

GENERAL NOTE Standard references should direct to the latest version of a standard. If an older version of a standard is used, section P15 shall be used for explanation.

NOTE B2 IEC 61249-2-21 defines maximum limits of 900 ppm for each of the substances chlorine and bromine and a maximum limit of 1500ppm of these substances combined. The standard does not address fluorine, iodine and astatine which are included in the group of halogens.

NOTE B3 and B4 A Guidance document on Chemical substances is available; see <http://www.ecma-international.org/publications/standards/Ecma-370.htm>.

NOTE B5 If a certain substance has been assigned a certain risk phrases / hazard statement in the referenced source, this does not necessarily mean the substance has been tested for all of the hazards referred to by a certain customer.


Model number *	645 G11	Logo 
Issue date *	4/19/2024	

Product environmental attributes - Market requirements (continued)				Requirement met		
Item				Yes	No	n.a.
Material and substance requirements (continued)						
P7.20*	Postconsumer recycled plastic material content is used in the product (See NOTE B6): If YES; at least one of the two alternatives below shall be answered; a) Of total plastic parts' weight > 25 g, the postconsumer recycled plastic material content (calculated as a percentage of total plastic by weight) is 23.4% . or b) The weight of recycled material is g .			<input checked="" type="checkbox"/>	<input type="checkbox"/>	<input type="checkbox"/>
P7.21*	Biobased plastic material content is used in the product (See NOTE B7): If YES; at least one of the two alternatives below shall be answered; a) Of total plastic parts' weight > 25 g, the biobased plastic material content (calculated as a percentage of total plastic by weight) is % . or b) The weight of the biobased plastic material is g .			<input type="checkbox"/>	<input checked="" type="checkbox"/>	<input type="checkbox"/>
P7.22*	Light sources are free from mercury, i.e. less than 0,1 mg/lamp. If mercury is used specify: Number of lamps: and maximum mercury content per lamp: 0 mg			<input checked="" type="checkbox"/>	<input type="checkbox"/>	<input type="checkbox"/>
P7.23*	If product includes an integral display, the total mercury content in the integrated display: 0 mg			<input checked="" type="checkbox"/>	<input type="checkbox"/>	<input type="checkbox"/>
P8 Batteries						
P8.1*	Battery chemical composition:			<input type="checkbox"/>	<input type="checkbox"/>	<input checked="" type="checkbox"/>
P9 Energy consumption (See NOTE B8)						
P9.1 For the product the following power levels or energy consumptions are reported:						
Energy mode *	Power level at 100 V AC	Power level at 115 V AC	Power level at 230 V AC	Reference/Standard for energy modes and test method *		<input type="checkbox"/>
EPS No-load (External power supply / charger plugged in the wall outlet but disconnected from the product.)	0.044 W	0.045 W	0.080 W	EPS Energy Test Report		
PTEC * Typical Energy Consumption	N/A W	N/A W	N/A W	EnergyStar@ Program Requirements for Computer		<input checked="" type="checkbox"/>
ETEC * Annual Energy Consumption	13.89 kWh/year	14.62 kWh/year	15.08 kWh/year	EnergyStar@ Program Requirements for Computer		<input type="checkbox"/>
External Power Supply Efficiency Level (International Efficiency Marking Protocol) *: VI				EnergyStar@ Program Requirements for Computer		<input type="checkbox"/>
Display resolution *: 1920*1200 megapixels				EnergyStar@ Program Requirements for Computer		<input type="checkbox"/>
Default time to enter energy save mode: minutes				EnergyStar@ Program Requirements for Computer		<input type="checkbox"/>
P9.2*	Information about the energy save function is provided with the product.			<input checked="" type="checkbox"/>	<input type="checkbox"/>	<input type="checkbox"/>
P9.3	Energy efficiency class (monitors only):					<input checked="" type="checkbox"/>

NOTE B6 Applies to a product containing plastic parts whose combined weight exceeds 100 g with the exception of printed circuit boards, cables, connectors and electronic components and bio-based plastic material.

NOTE B7 The following is to be excluded from the calculation of percentage: printed circuit boards, labels, cables, connectors and electronic components and postconsumer recycled plastic

NOTE B8 A Guidance document on Energy Efficiency is available; see <http://www.ecma-international.org/publications/standards/Ecma-370.htm>.

Model number *	645 G11	Logo 
Issue date *	4/19/2024	

Product environmental attributes - Market requirements (continued)			Requirement met			
Item			Yes	No	n.a.	
P10 Emissions						
Noise emission – Declared according to ISO 9296 (See NOTE B9)						
P10.1	Mode	Mode description	Statistical upper limit A-weighted sound power level, $L_{WA,c}$ (B)			
	Idle	* <i>Fans on</i>	* 2.6	<input type="checkbox"/>	<input type="checkbox"/>	
	Operation	* <i>Operating SSD</i>	* 3.7	<input type="checkbox"/>	<input type="checkbox"/>	
	Other mode					
	Measured according to: <input checked="" type="checkbox"/> ISO 7779 <input checked="" type="checkbox"/> ECMA-74 <input type="checkbox"/> Other (only if not covered by ECMA-74)					
Electromagnetic emissions						
P10.4	Computer display meets the requirement for low frequency electromagnetic fields of the following voluntary program(s):			<input type="checkbox"/>	<input type="checkbox"/>	<input type="checkbox"/>
P12 Ergonomics for computing products						
P12.1*	The display meets the ergonomic requirements of ISO 9241-307 for visual display technologies.			<input checked="" type="checkbox"/>	<input type="checkbox"/>	<input type="checkbox"/>
P12.2*	The physical input device meets the requirements of ISO 9995 and ISO 9241-410.			<input checked="" type="checkbox"/>	<input type="checkbox"/>	<input type="checkbox"/>
P13 Packaging and documentation						
P13.1*	Product packaging material type(s): <i>PAPER/ Corrugated</i>		weight (kg): <i>0.230</i>			
	Product packaging material type(s): <i>PAPER/Molded Pulp</i>		weight (kg): <i>0.140</i>			
	Product packaging material type(s): <i>PAPER/paperboard</i>		weight(kg): <i>0.014</i>			
	Product packaging material type(s): <i>PLASTIC/Polyethylene low density – LDPE</i>		weight(kg): <i>0.016</i>			
P13.2*	Product plastic primary packaging is free from PVC.			<input checked="" type="checkbox"/>	<input type="checkbox"/>	<input type="checkbox"/>
P13.3*	For product primary corrugated fiberboard packaging, specify the contained percentage of minimum post-consumer recovered fiber content: <i>58</i> %				<input type="checkbox"/>	
P13.4*	Specify media for user and product documentation (tick box): Electronic <input type="checkbox"/> , Paper <input type="checkbox"/> , Other <input checked="" type="checkbox"/> Available on HP.com					<input type="checkbox"/>
P13.5	(Please only complete this item if paper documentation used) User and product documentation on paper media is chlorine-free: If Yes, please specify: Totally chlorine-free Elemental chlorine-free Processed chlorine-free			<input checked="" type="checkbox"/>	<input type="checkbox"/>	
				<input type="checkbox"/>		
				<input checked="" type="checkbox"/>		
				<input type="checkbox"/>		
P14 Voluntary programs						
P14.1	The product meets the requirements of the following voluntary program(s):					
	ENERGY STAR®	Criteria version: <i>8.0</i>	Date: <i>4/19/2024</i>	Product category: <i>Commercial Notebook</i>		
	Eco-label: <i>EPEAT</i>	Criteria version: <i>IEEE 1680.1</i>	Date: <i>4/19/2024</i>	Product category: <i>Commercial Notebook</i>		
	Eco-label: <i>TCO</i>	Criteria version: <i>9.0</i>	Date: <i>4/19/2024</i>	Product category: <i>Commercial Notebook</i>		
P15 Additional information (See NOTE B10)						
P9	Energy consumption of computer products; description of the tested product configuration:					
All Sections	1. Product environmental information contained in this declaration is valid as of the date the declaration is published. Changes to external standards referenced in the IT Eco-Declaration may invalidate some information contained in this declaration over					
P1	1. This product does not include DEHP, BBP, DIBP, or DBP.					

NOTE B9 A Guidance document on Acoustic Noise is available;
see <http://www.ecma-international.org/publications/standards/Ecma-370.htm>.

NOTE B10 Additional lines may be inserted to declare further items, by positioning the cursor at the far right of the row and hitting the <Enter> key.

P7 Product Upgradability and Reparability

The following table is provided in accordance with IEEE 1680.1-2018⁶ criterion 4.4.2.5.

feature	Available[1]	Repairable[2]	Replaceable[2]	Upgradeable[3]
processor	Y	Y	Y*	N
main memory	Y	Y	Y	Y
mass storage (internal)	Y	Y	Y	Y
wireless networking	Y	Y	Y	Y
integrated graphics	Y	Y	Y*	N
discrete graphics	N	N/A	N/A	N/A
display panel	Y	Y	Y	Y
integrated keyboard	Y	Y	Y	Y
battery	Y	Y	Y	N
power supply	Y	Y	Y	Y
fan assemblies	Y	Y	Y	N
speaker(s) (internal)	Y	Y	Y	N
camera	Y*	Y	Y	N
touchpad	Y	Y	Y	N
I/O connectors and external power connector	Y	Y	Y	N
readers [5]	Y*	Y	Y	N

Table notes:

[1] Y* = feature is available, but may not be included in every configuration

[2] Product can be repaired (returned to fully functional state) if feature fails.

[3] Feature can be replaced using only commonly available tools without soldering or de-soldering. Y* = replacement may require replacing an assembly to which the feature is attached.

[4] Base feature may be upgraded by replacing it with a higher performance module or by expanding capacity through use of expansion slots. NOTE: This evaluation does not

account for situations in which the initial configuration purchased is already maximized. Contact HP Sales or an HP authorized reseller to determine the availability of upgrade parts and method to obtain them in your geography.

[5] This feature category includes readers such as fingerprint readers, smart card readers, and other read-only devices, but excludes read/write devices.

P9 1. European Union Commission Regulation 1275/2008- Energy Efficiency Information:

Mode / Condition	Power Consumption in Watts at 230 VAC Input Voltage	Default Time to Mode / Condition (if applicable)
Off Mode (if applicable)	0.38W	Not Applicable
Standby Mode (if applicable)	Not Applicable	Not Applicable
Network Standby / Sleep / Long Idle Mode if all wired network ports are connected and all wireless network ports are activated (if applicable)	N/A	N/A
Network Standby / Sleep / Long Idle Mode (if applicable)	N/A	N/A

2. European Union Commission Regulation 1275/2008- Wireless Network Instructions:

Where applicable, activate and deactivate a wireless network using the instructions provided in the product user guide or the operating system. Information is also available at www.hp.com/support.

P10 Sound Pressure Level

Noise emission – Declared according to ISO 9296 (See NOTE ^{B9})

P10.1	Mode	Mode description	Statistical upper limit A-weighted sound pressure level, $L_{pA,m}$ (dB)
	Idle	* Fans on	* 14.8
	Operation	* Operating SSD	* 29.1
	Other mode		
Measured according to: <input checked="" type="checkbox"/> ISO 7779 <input checked="" type="checkbox"/> ECMA-74			

⁶ IEEE Standard for Environmental and Social Responsibility Assessment of Computers and Displays

Legal references Europe Annex B2

Reference	Declaration item
Directive 2011/65/EU (RoHS Directive)* * Specific exemptions apply for certain products and applications.	P1.1, P3.1
Regulation (EC) 1907/2006 (REACH Regulation), annex XVII	P1.2, P1.4, P1.6, P1.7
Regulation (EC) 2037/2000, 2038/2000, 2039/2000 (Marketing and use of Ozone layer depleting substances)	P1.3, P5.3
Norwegian regulation relating to restrictions on the use of certain dangerous chemicals 20.12.2002	P1.5
Directive 2006/66/EC (Battery and accumulators Directive), as amended.* * These provisions shall not apply where, for safety, performance, medical or data integrity reasons, continuity of power supply is necessary and requires a permanent connection between the appliance and the battery or accumulator.	P2.1, P2.2, P2.3, P8.1
Directive 2014/35/EU (Low Voltage Directive)	P3.1
Directive 2014/30/EU (EMC Directive)	P3.1
Directive 2014/53/EU (RE Directive)	P3.1
Regulation (EC) 801/2013 amending Regulation (EC) No 1275/2008 with regard to ecodesign requirements for standby, off mode electric power consumption of electrical and electronic household and office equipment, and amending Regulation (EC) No 642/2009 with regard to ecodesign requirements for televisions	P3.1, P3.2
Commission Regulation (EC) No 278/2009 of 6 April 2009 implementing Directive 2005/32/EC of the European Parliament and of the Council with regard to ecodesign requirements for no-load condition electric power demand and average active efficiency of external power supplies	P3.1, P3.2, P9.1
COMMISSION REGULATION (EU) No 617/2013 of 26 June 2013 implementing Directive 2009/125/EC of the European Parliament and of the Council with regard to ecodesign requirements for computers and computer servers	P2.4, P2.5, P3.1, P3.2, P7.23, P9.1
Regulation (EC) No 1272/2008 (CLP Regulation)	P7.19
Directive 2004/12/EC (Packaging Directive)	P5.1
Decision 97/129/EC (Secondary packaging legislation)	P5.2
Directive 2012/19/EU (WEEE directive) Implementing Regulation (EU) 2019/290 establishing the format for registration and reporting of producers of electrical and electronic equipment to the register. Commission Implementing Regulation 2017/699 establishing a common methodology for the calculation of the weight of electrical and electronic equipment (EEE) placed on the national market in each Member State and a common methodology for the calculation of the quantity of waste electrical and electronic equipment (WEEE) generated by weight in each Member State.	P6.1

Product Carbon Footprint Report

16-Apr-2024

HP EliteBook 645 14 inch G11 Notebook PC ENERGY STAR



Estimated impact

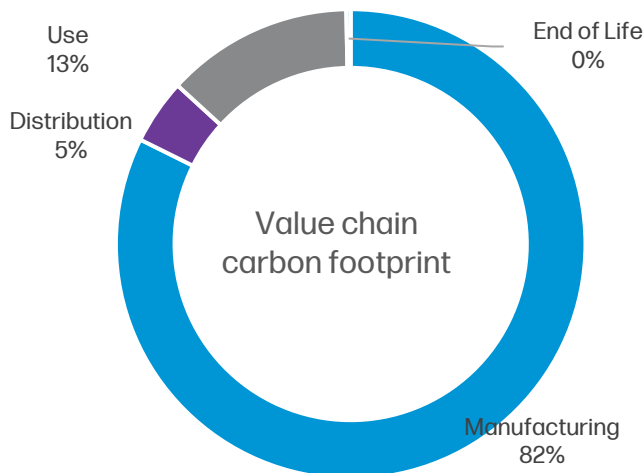
240
kg CO₂ eq.



As part of HP's commitment to continually improve the environmental performance of our products, we utilize product carbon footprinting (PCF) to better understand environmental impacts that occur at different stages of the product life cycle. A product carbon footprint is defined as the total amount of greenhouse gases emitted directly and indirectly by a product over its lifetime. Greenhouse gas emissions are reported as global warming potential for 100-year time horizon (GWP-100) in units of CO₂ equivalence. Our product carbon footprints include full value chain emissions, which incorporate carbon emissions due to raw materials extraction, manufacturing, distribution, use, and product end-of-use.

The information provided here represents the lifecycle carbon footprint of an industry-average notebook computer with the specifications listed in Assumptions table.

GHG Emissions



Manufacturing Breakout

Solid State Drive (SSD)	55%
Mainboard and other boards	19%
Display	15%
Chassis	4%
Batteries	3%
Power Supply Unit & External Cables	2%
Others*	2%

HP's environmental impact calculations are done in accordance with ISO 14040/44. All estimates of impact results are uncertain, resulting largely from data limitations and data quality. To mitigate this uncertainty, HP has developed HP-specific tools that use a combination of HP processes and product data, as well as high-quality lifecycle assessment data. HP strives to provide the most accurate environmental impact results but uncertainty will never be completely minimized and results should be considered accordingly.

Assumptions

Lifetime of product (years)	4
Use location	North America
Use energy demand (kWh/year)	14.62
Product weight (kg)	1.69
Screen size (in)	14
Final manufacturing location	China

Additional product environmental performance

Additional information about HP's carbon footprinting program can be found in HP's yearly Sustainability Report, which is available on the HP Sustainability website.

The site also contains IT Eco Declarations, which provide product-specific environmental information, as well as information on HP's product recycling programs.

* Others section includes assembly energy, other subassemblies and all subassemblies packaging and transport

Learn more at

[HP's Sustainability Website](#)

© Copyright 2021 HP Development Company, LP. The information contained herein is subject to change without notice. The only warranties for HP products and services are set forth in the express warranty statements accompanying such products and services. Nothing herein should be construed as constituting an additional warranty. HP shall not be liable for technical or editorial errors or omissions contained herein.

